



**GILLINGHAM STRATEGIC SITE ALLOCATION,  
NORTH DOREST**

**TRANSPORT ASSESSMENT  
VOLUME 2: FIGURES AND DRAWINGS**

**Client: South Gillingham Consortium**



**i-Transport**

**TRANSPORT ASSESSMENT**

**VOLUME 2: FIGURES AND DRAWINGS**

**GILLINGHAM STRATEGIC SITE ALLOCATION,  
NORTH DORSET**

**Client: South Gillingham Consortium**

i-Transport LLP  
Grove House  
Lutyens Close  
Chineham Court  
Basingstoke  
Hampshire  
RG24 8AG  
Tel: 01256 338640  
Fax: 01256 338644  
[www.i-transport.co.uk](http://www.i-transport.co.uk)

i-Transport Ref: BT/RH/EF/ITB4057-202 R

Date: 1 November 2017

**COPYRIGHT**

The contents of this document must not be copied or reproduced in whole or in part without the written consent of i-Transport LLP

## QUALITY MANAGEMENT

Report No.	Comments	Date	Author	Authorised
ITB4057-202 R		01/11/17	BT/RH/EF	BT

File ref: T:\Projects\4000 Series Project Numbers\4057\ITB Ham Farm, Gillingham, Dorset\Admin\Report & TN\202 Transport Assessment\ITB4057 R - Gillingham Transport Assessment Vol 2 flysheet.docx

## **FIGURES**

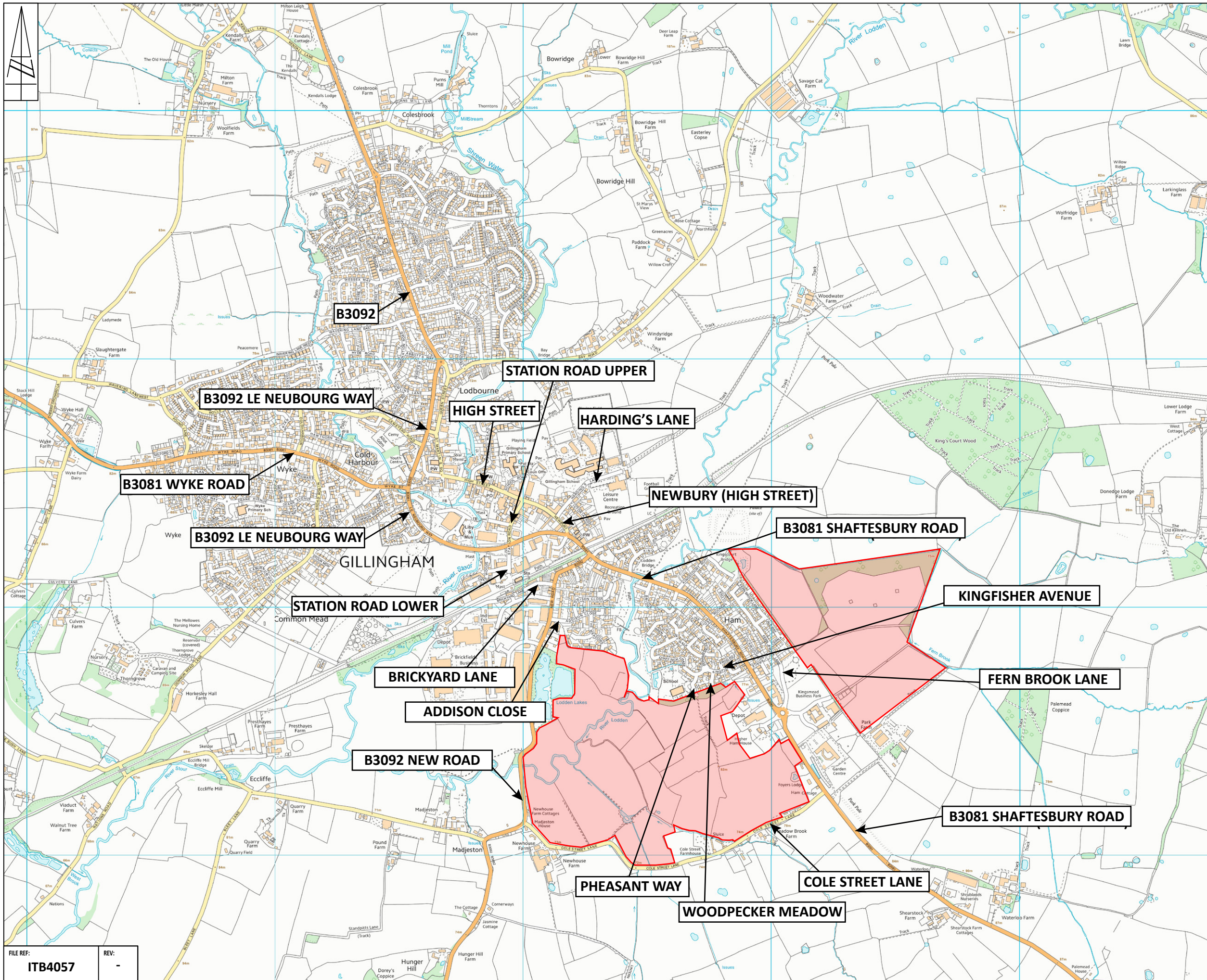
<b>FIGURE 1.1</b>	<b>SITE LOCATION PLAN</b>
<b>FIGURE 5.1</b>	<b>PUBLIC RIGHTS OF WAY PLAN</b>
<b>FIGURE 5.2</b>	<b>BUS SERVICES AND ROUTES</b>
<b>FIGURE 5.3</b>	<b>JUNCTIONS WITHIN STUDY AREA OUTSIDE OF GILLINGHAM</b>
<b>FIGURE 8.1</b>	<b>LOCAL FACILITIES PLAN</b>
<b>FIGURE 8.2</b>	<b>WALKING CATCHMENTS</b>
<b>FIGURE 8.3</b>	<b>CYCLING CATCHMENTS</b>
<b>FIGURE 10.1</b>	<b>PROPOSED SCOOT INSTALLATION</b>

## **DRAWINGS**

<b>ITB4057-GA-1000</b>	<b>PROPOSED SITE ACCESS ARRANGEMENTS – KEY PLAN</b>
<b>ITB4057-GA-076</b>	<b>EXTENSION OF THE EASTERN ARM OF THE EXISTING PARK FARM ROUNDAABOUT</b>
<b>ITB4057-GA-079</b>	<b>EASTERN END OF CERNE AVENUE / CALE WAY JUNCTION</b>
<b>ITB4057-GA-080</b>	<b>EASTERN END OF TRENT SQUARE / FERN BROOK LANE JUNCTION</b>
<b>ITB4057-GA-073</b>	<b>SIGNALISED JUNCTION ON THE B3081 SHAFTESBURY ROAD TO THE SOUTH OF THE EXISTING PARK FARM ROUNDAABOUT</b>
<b>ITB4057-GA-077</b>	<b>EXTENSION OF WOODPECKER MEADOW</b>
<b>ITB4057-GA-081</b>	<b>PRIORITY JUNCTION TO THE SOUTH OF ADDISON CLOSE</b>
<b>ITB4057-GA-082</b>	<b>NEW ACCESS FROM THE B3092 NEW ROAD TO SOUTH OF LODDEN LAKES</b>
<b>ITB4057-GA-078</b>	<b>PEDESTRIAN / CYCLE ACCESS VIA PHEASANT WAY VIA EXISTING FOOTPATH N64/33</b>
<b>ITB4057-GA-070</b>	<b>PRINCIPAL STREET – PROPOSED ALIGNMENT</b>
<b>ITB4057-GA-027</b>	<b>B3081 SHAFTESBURY ROAD / B3092 NEW ROAD JUNCTION IMPROVEMENT SCHEME</b>
<b>ITB4057-GA-066</b>	<b>B3081 LE NEUBOURG WAY / NEWBURY (HIGH STREET) JUNCTION IMPROVEMENT SCHEME</b>

## FIGURES





KEY  
SITE BOUNDARY



Grove House, Lutyens Close, Chineham Court,  
Basingstoke, RG24 8AG  
Tel: 01256 338 640  
Fax: 01256 338 644  
[www.i-transport.co.uk](http://www.i-transport.co.uk)

TITLE:  
**GILLINGHAM STRATEGIC SITE  
ALLOCATION, NORTH DORSET  
SITE LOCATION PLAN**

FIGURE No:  
**FIGURE 1.1**

FILE REF:  
**ITB4057**

REV:  
**-**

Reproduced from ordnance survey by the permission of the controller of her majestys  
stationery office. Crown copyright. All rights reserved. Licence number 100022432